

NetRegs

environmental regulations online

[www.netregs.org.uk](http://www.netregs.org.uk)

# Forestry Compliance Action Plan

2026



# Contents

---

<b>Foreword</b>	<b>3</b>
<b>1. Introduction</b>	<b>5</b>
<b>2. Scope of the plan</b>	<b>7</b>
<b>3. Forestry sector partnership working</b>	<b>8</b>
<b>4. The forestry supply chain</b>	<b>10</b>
<b>5. Potential environmental impacts and how they are managed</b>	<b>11</b>
<b>6. Tackling non-compliance</b>	<b>17</b>
<b>7. Water</b>	<b>23</b>
<b>8. Summary of actions and aspirations</b>	<b>26</b>

# Foreword

---

SEPA's National Campaigns & Initiatives Unit (NCI) sits within the Water Industry & Rural Environment (WIRE) Team which is part of the Regulation Business & Environment (RBE) Portfolio.

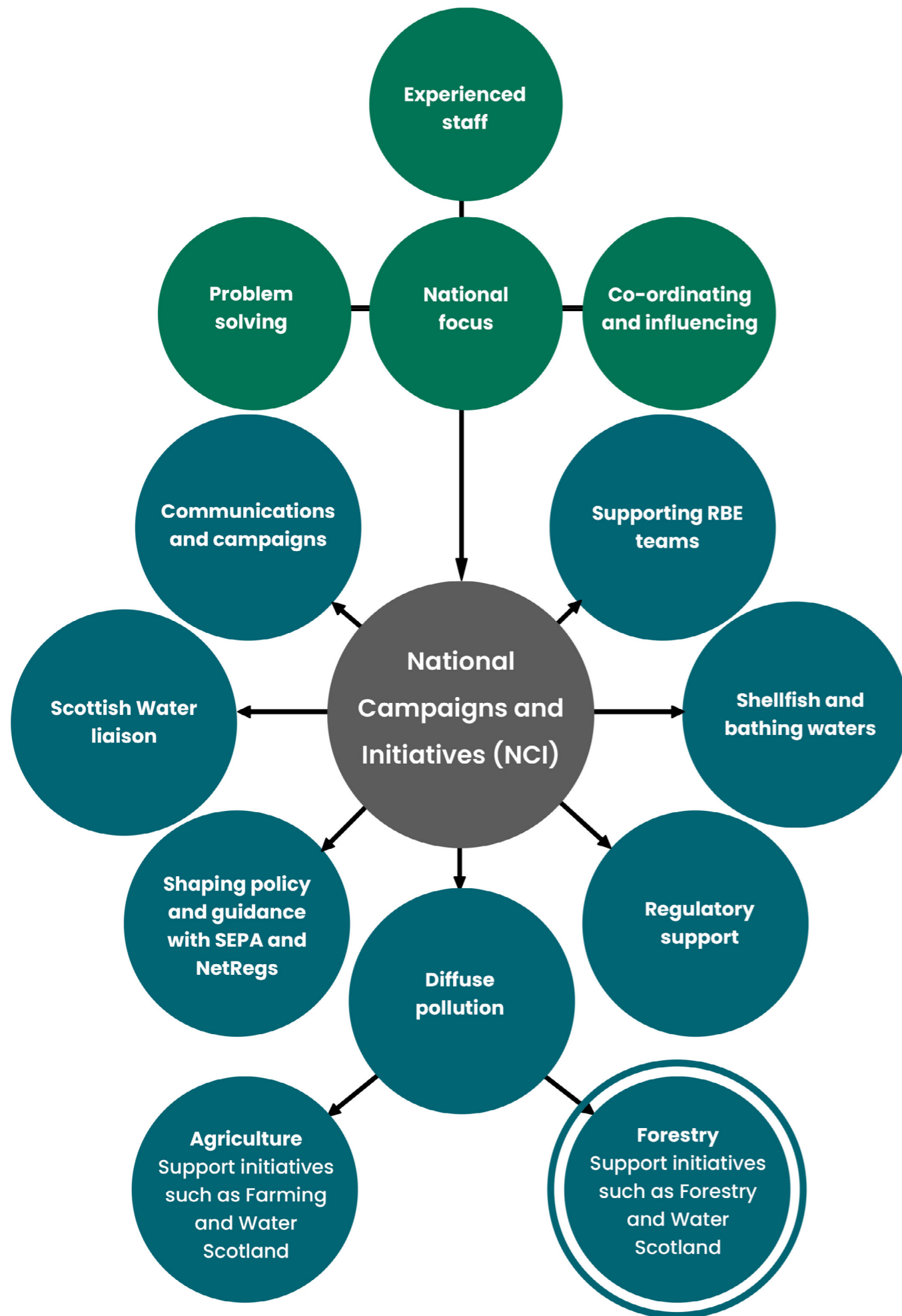
Our small Unit delivers on a diverse range of work areas and support functions across SEPA to assist the delivery of core Corporate Plan and Annual Operating Plan aims as well as key River Basin Management Plan (RBMP) objectives. This work varies from compliance inspections, inputting into policy/guidance, partnership working internally and externally, regulatory campaign work delivery and supporting EP colleagues with regulatory and NetRegs advice. NCI staff offer pragmatism combined with regulatory experience in shaping our interaction with others to deliver an effective support function across SEPA. Our team also offers the flexibility to assist 'where required' based on the changing demands of the organisation.

Figure 1. summarises the key work areas our staff are involved in: Our forestry compliance plan is aimed at assisting SEPA deliver its Corporate Plan aims and our RBMP Objectives for forestry in Scotland.

Our forestry industry diffuse pollution compliance project work has shone a spotlight on non-compliance issues and areas where existing good practice guidance needs updating or creating. Our findings have helped shape areas needing improvement and our partnership working approach ensures awareness of such changes and expectations is promoted across the industry. This will raise industry standards and drive regulatory consistency.

This Forestry Compliance Action Plan outlines the approach we have taken, our direction of travel and a summary of our work readily available on the NetRegs website.

If staff have any forestry questions, please contact [wire.campaigns@sepa.org.uk](mailto:wire.campaigns@sepa.org.uk).



**Figure 1.** National Campaigns and Initiatives overview

# 1. Introduction

Forests can help mitigate climate change, support an inclusive and growing economy, enhance land management and biodiversity outcomes and can achieve many other environmental benefits.

However, poor forestry stewardship and site management can cause environmental harm. Scottish Government has set high ambitions for this sector and the industry and many other stakeholders share these aims. This plan sets out our ideas for how we can play our role as Scotland’s environment protection regulator to ensure that these aspirations are achieved with environmental excellence at the heart of the sector’s activities.

This Compliance Action Plan outlines how we will regulate and work in partnership with the forestry sector to recognise the efforts made by the sector over the last 20 years to improve environmental performance in line with the UK Forestry Standard, the benchmark for forestry environmental excellence. The Plan outlines how SEPA will work with the sector to influence, support and regulate practitioners to improve compliance, reduce the number of environmental incidents and assist operators deliver sustainable forest management.

Our forestry compliance plan is aimed at assisting SEPA deliver its Corporate Plan aims and our RBMP Objectives for forestry in Scotland.

## The climate emergency

As Scotland’s principal environmental regulator, we set and enforce standards to secure clean water, air and land, ensure responsible resource use, and tackle the climate change and biodiversity crises.

Specific actions to address these are outlined within our Corporate and Annual Operating Plans, Evidence Strategy Vision as well as our River Basin Management Plans and team approaches to regulation.

## Our approach

SEPA's statutory purpose is **to protect and improve the environment in ways that, as far as possible, create health and well-being benefits and sustainable economic growth.**

Our approach is to partnership work with forestry practitioners to improve regulatory compliance. This allows us to get a much better understanding of the challenges faced, the people who work in it, communities impacted by it and to highlight areas for improvement. In this way we can systematically identify the compliance issues that need to be tackled.

It is important to note that many businesses are already making marked performance improvements, for example through forestry managers meeting the UK Woodland Assurance Standard (UKWAS).

Our Plan highlights the benefits of partnership working, shaping interactions, improving communication with stakeholders receiving the relationship that their performance, attitude and approach deserves. Those that demonstrate a positive commitment to good environmental performance in delivering good quality and consistent outcomes will receive good support, guidance and advice. By contrast, those that demonstrate significant or chronic non-compliance can expect SEPA to provide clear advice and guidance alongside appropriate enforcement action to bring them into compliance.

This approach will improve communication, offer clarity, consistency and regulatory fairness.

## 2. Scope of the plan

---

This forestry compliance plan outlines our regulatory role and how we can exert influence in order to protect and improve the environment.

Scottish Forestry is the Scottish Government agency responsible for forestry policy, support and regulation. Although SEPA is not the primary regulator in terms of forestry activities, we collaborate with Scottish Forestry to carry out our joint duties, to ensure all activities meet the Environmental Authorisation Scotland Regulations 2018 (EASR) and we expect full compliance with environmental law. Such activities include: forestry planning, planting, operations management, harvesting & restocking, fuels & chemicals, quarrying and roads

The Plan outlines how we will use our shared influence to improve environmental performance.



*Image: Tree planting*

### 3. Forestry sector partnership working

Our corporate aim is to recognise that:

- Scotland continues to develop a resilient, sustainable forestry industry that delivers environmental, social and economic success to Scotland’s people and businesses.
- Scotland’s forestry expands its contribution to reducing the effects of climate change and contributing to a low carbon, circular economy.
- Strong and effective partnership working with all stakeholders and communities promotes positive relationships, excellent environmental compliance, innovation and collaborative research and development.

The Scottish Government published Scotland’s Forestry Strategy 2019–2029, which sets out a long-term vision for Scotland’s forests and woodlands in line with the Forestry and Land Management (Scotland) Act 2018. SEPA supports the Strategy vision, objectives and priorities. SEPA will work collaboratively with the Scottish Government and the forestry industry to deliver the Forestry Strategy and associated implementation Plan.

#### Our objectives

The objectives of the forestry compliance plan are to:

- Ensure full compliance by supporting all forestry businesses to meet their legal environmental obligations
- Improve policy and guidance by helping update existing materials and contributing towards new guidance that supports better environmental performance
- Improve environmental outcomes by helping avoid, or control, pollution at source and supporting practices that protect water, values soil management and promotes biodiversity

Achieving full compliance helps deliver stronger business success.

For our objectives to be achieved, we will work with partners to highlight opportunities that link business success with environmental success.

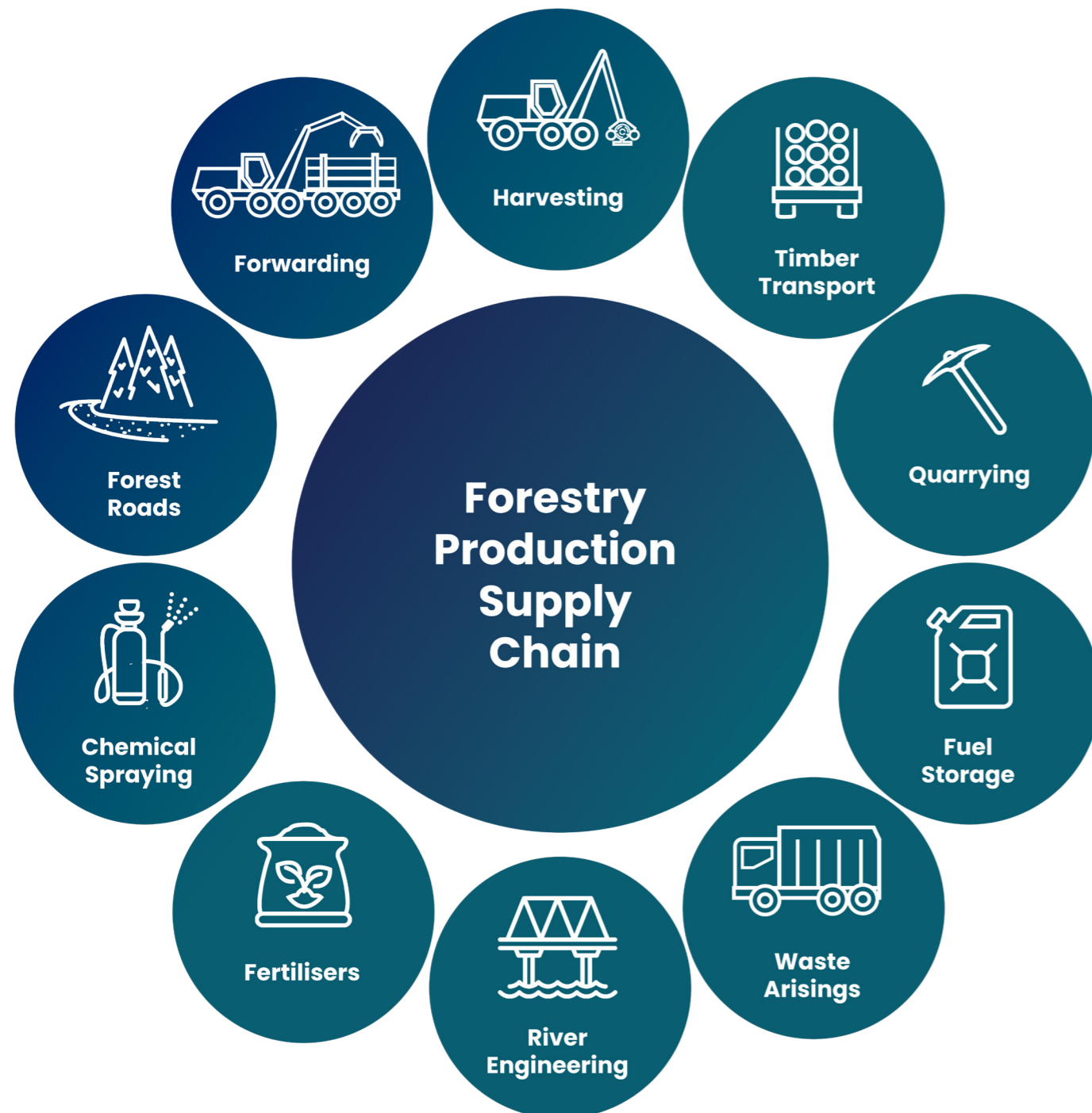
The Plan will reduce business impacts on the environment and will support the objectives set out in our river basin management plans.



Figure 2. Compliance Plan vision

## 4. The forestry supply chain

This compliance plan covers the forestry 'production' part of the whole supply chain namely the Planning, Planting, Management and Harvesting stages which in themselves may include, access roads, quarrying, chemical spraying, fertiliser applications, waste arisings, river engineering and fuel storage. (Figure 3).



**Figure 3.** Forestry production supply chain

## 5. Potential environmental impacts and how they are managed

This section provides an overview of the key potential environmental impacts arising from forestry production.

### Impacts from forestry and woodland planning, design, ground preparation, planting, management, harvesting and restocking

- impacts on water quality and ecology from diffuse pollution sources, carbon loss, soil loss and peat disturbance.
- impacts on water quality, ecology and soil from the management of brash and forestry residues.
- impacts on soil, water quality, ecology and air quality from inappropriate application of pesticides and fertilisers.
- impacts on soil quality, structure and functionality from poor site management.
- impacts on peatland from drainage through ground preparation and road building.
- impacts on biodiversity from poor forest design, poor operational management, harvesting regimes and chemical applications.
- impacts on tree resilience from pests and diseases and spread of invasive non-native species (INNS).
- impacts on water quality from peat and soil disturbance.
- impacts on public and private water supplies
- management of wastes and fuels on site e.g. old equipment and machinery, tree guards, tyres, containers, bags and refuse.

### Impacts from transport and road construction

- impacts on soil, water quality and quantity from forest roads due to logging, construction and site traffic.
- impacts on water quality from quarrying activities.
- impacts on drainage, water quality, channel form and fish migration due to channel straightening, poorly designed or maintained culverts and pipe bridges.



**Images:** Examples of water pollution from forestry operations

Forestry contributes considerable social and economic benefits to society as well as our environment, as long as the risks and impacts outlined in Section 5 are avoided or mitigated and good forestry practices are adopted at all times.

### **Environmental benefits**

- forests can help mitigate climate change by reducing the amount of greenhouse gases in the atmosphere. They do this by absorbing carbon dioxide, using the carbon for tree growth and storing it in their leaves, wood and soil around them. Growing more trees will result in more carbon removal from the atmosphere
- forestry products represent a considerable carbon stock, and wood products can substitute for other more fossil-fuel intensive materials
- forests and woodlands can help society adapt to a changing climate, by reducing the risk of flooding (for example through opportunity mapping and promotion of natural flood management projects), providing shade for humans and wildlife, protecting land from winds and reducing soil erosion
- forests have an increasingly important role as havens for wildlife and for the protection of endangered species of plants and animals
- well-managed forests protect against soil loss and maximise carbon storage potential

### **Environmental obligations**

Our role as Scotland's environmental regulator is to protect and improve the environment by ensuring that activities which could cause harm, such as pollution or resource misuse, are properly controlled.

SEPA has a regulatory duty to ensure all forestry activities comply with EASR and this regulatory work is supported by our partnership work, frameworks and by our role as a statutory planning consultee

The basis for delivering effective environmental regulation begins at the planning stage. Good decision-making at this stage has positive outcomes for the next 40–50 years of a forest's growth cycle. We provide clear planning guidance on regulatory compliance, supported by strong and consistent regulatory advice and robust, evidence-based scientific advice. This is achieved by effective partnership working with Scottish Forestry, the local authority planning departments and other statutory bodies such as NatureScot.

## Forestry production

Scottish Forestry is the Scottish Government agency responsible for forestry policy, support and regulations – the primary regulatory body for forestry activities. However, SEPA works in partnership with Scottish Forestry to reinforce the requirement for operator full compliance with environmental regulations.

The UK Forestry Standard (UKFS) sets out the UK government’s approach to sustainable forestry and is the industry reference standard for achieving sustainable forest management and environmental excellence.

It sets out standards and good practice requirements to ensure that forestry activities comply with regulations. Meeting UKFS requirements demonstrates that forestry operations are both legally compliant and sustainable. Many of SEPA’s regulatory interests in protecting the water environment are contained within the UKFS.

The UK Woodland Assurance Standard (UKWAS) provides the basis for independent forest certification. It combines UKFS with the requirements of the two main international certification schemes used in the UK: the Forest Stewardship Council (FSC) and the Programme for the Endorsement of Forest Certification (PEFC). UKWAS is managed by a partnership of organisations independent of government. Forest owners choose certification to demonstrate high management standards and environmental compliance, enabling access to FSC and PEFC labelling on wood products.

## Key regulations and policies affecting the forestry sector

### Environmental Authorisations (Scotland) Regulations 2018

From 1 November 2025, water, waste management, and industrial activities are regulated under Environmental Authorisation (Scotland) Regulations 2018 (EASR).

For forestry activities, these new Regulations replace The Water Environment (Controlled Activities)(Scotland) Regulations 2011 (CAR) and the Waste Management Licensing (Scotland) Regulations 2011 (WML). Many of the controls are through General Binding Rules (GBRs) that provide statutory controls over low-risk activities.

Likewise waste arising from forestry activities must comply with EASR to ensure items such as abandoned equipment and machinery, tyres, plastics (including spent tree guards and planting bags), containers and refuse are properly collected and transported to a suitably authorised site for reuse, recycling or disposal.

If there are breaches of environmental standards, the issue will be reported to Scottish Forestry to investigate for breaches of UKFS whilst SEPA may also investigate for breaches of EASR, take appropriate enforcement action and share incident findings. Sometimes incidents will demand joint investigations.

## Waste hierarchy and circular economy

The waste hierarchy and circular economy (Figure 4.) help limit waste and reduce the use of tree-shelters and guards by prioritising Prevention, Reuse, Recycling and Recovery (energy) before disposal. The aim is to minimise environmental impacts and make better use of resources. The circular economy supports this by encouraging the ongoing reuse of materials, reducing waste, and promoting more sustainable production and consumption in a closed-loop system.

SEPA supports the waste hierarchy principles of:

- **Prevent**
- **Reduce**
- **Reuse**
- **Recycle**
- **Disposal**

SEPA also supports the sector’s circular economy efforts to reduce dependence on plastics, fertilisers and chemicals. Tree-shelters and guards should be a last resort, particularly in riparian areas where the risk of environmental pollution is high.

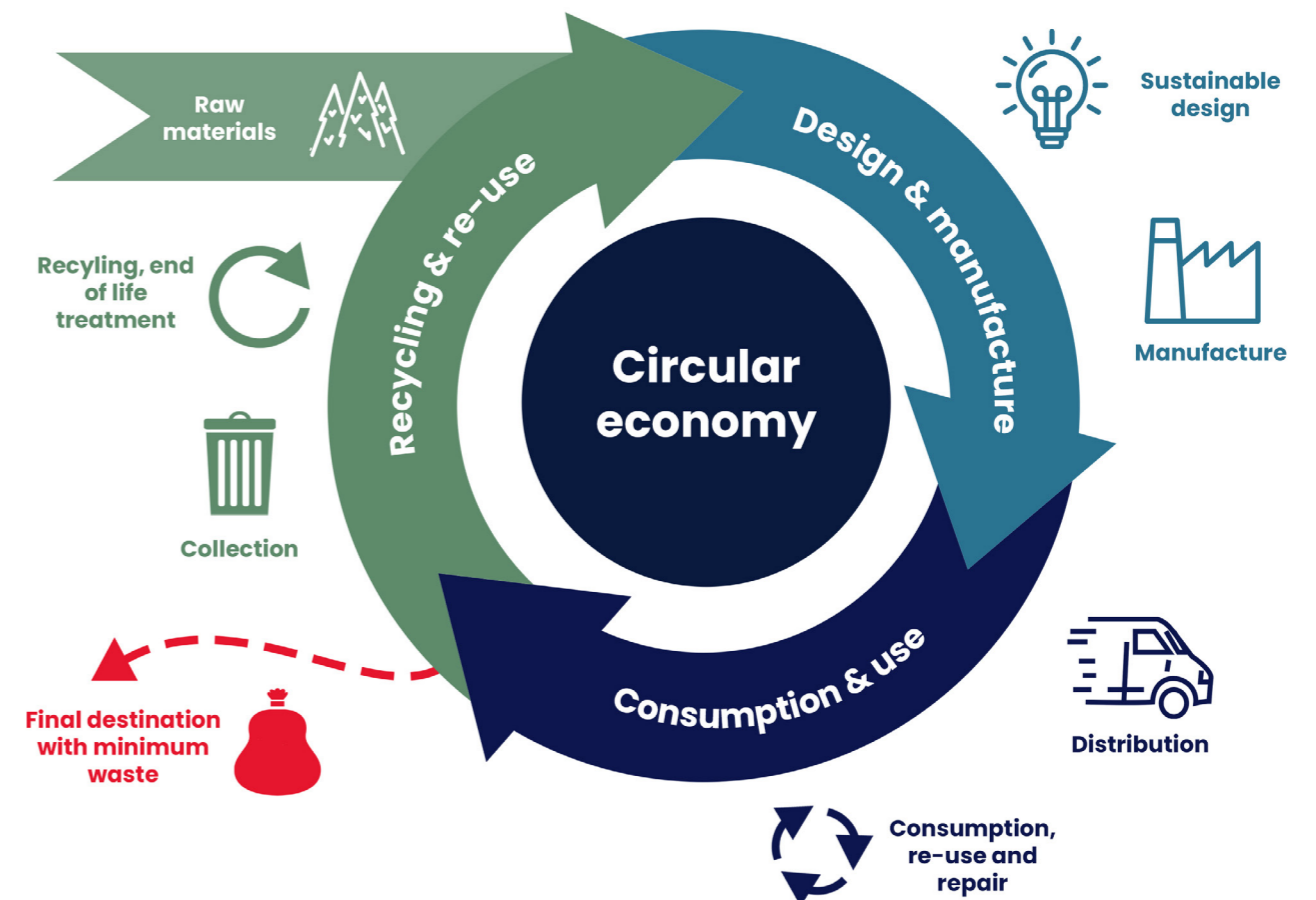


Figure 4. The circular economy model

## Key partners in forestry

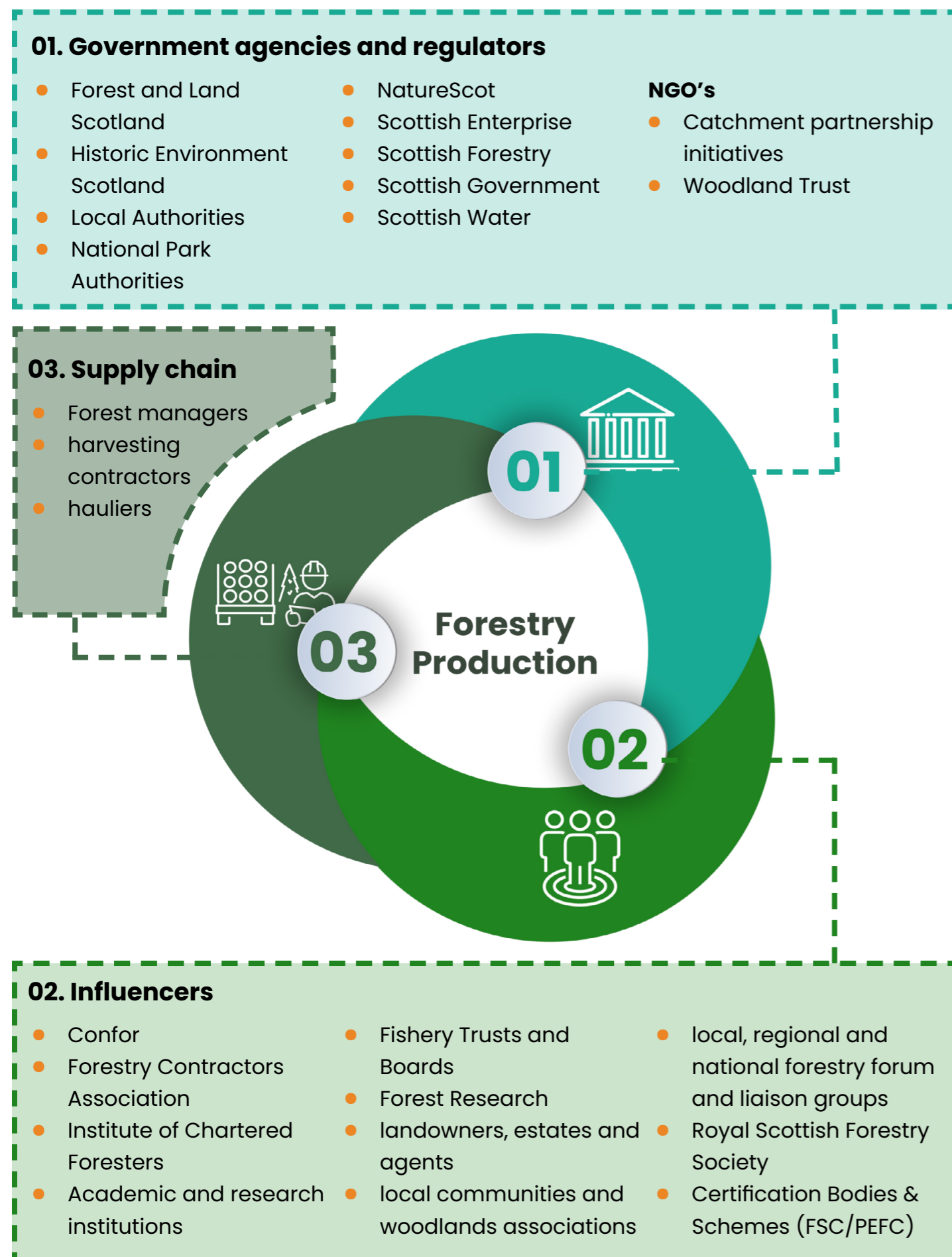


Figure 5. Forestry production key partners

## 6. Tackling non-compliance

We wish to be a firm, fair and effective regulator, listening to businesses and the public, and helping to improve and protect Scotland's environment. However, compliance with environmental law is fundamental to a successful business reputation and those with environmental obligations need to comply.

Non-compliant businesses can impact the environment and undermine legitimate businesses. We will use a variety of regulatory powers and draw from a range of interventions, including advice and guidance. We may use fixed monetary penalties or variable monetary penalties and enforcement undertakings, where appropriate. This will also help responsible compliant businesses by levelling the playing field and making it harder and more expensive for those who persistently fail to comply with their environmental obligations to operate.

For forestry production, compliance reporting is focused on General Binding Rules (GBRs) via;

- pro-active** - water and waste GBR compliance inspections
- re-active** - water and waste inspections following a pollution report or public complaint

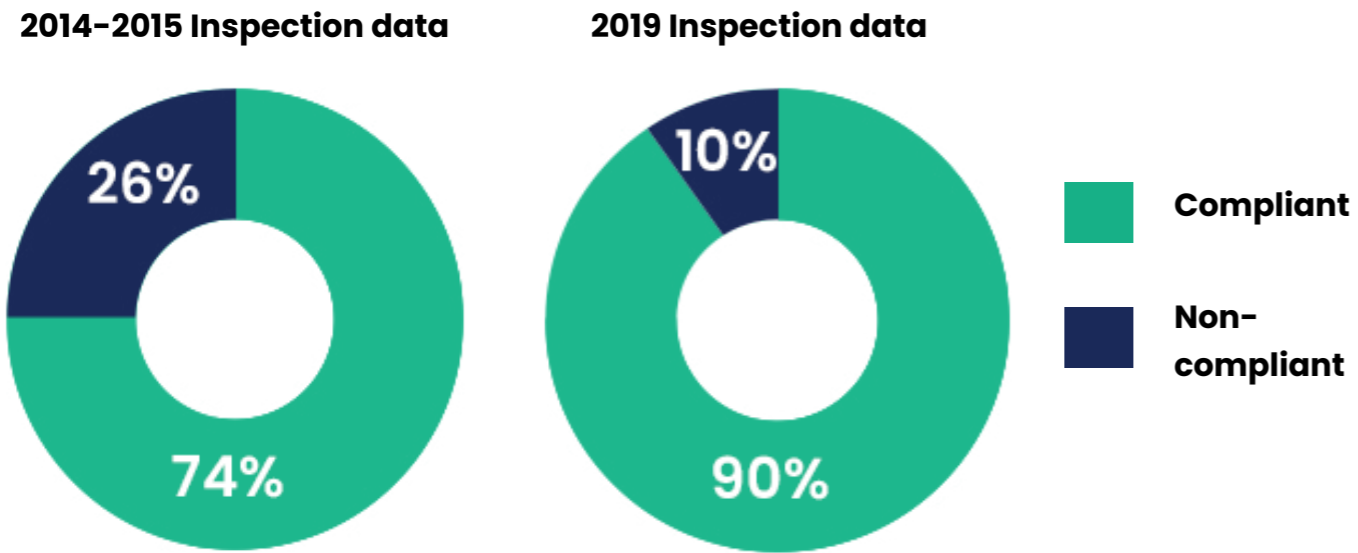
### Compliance in the sector

#### Forestry inspections

SEPA ran a Forestry Inspection project in south Scotland from 2014–2015 to conduct detailed audit inspections of forestry sites. The project covered audits of harvesting, planting, ground preparation, quarrying, road infrastructure and the waste arising from them to check compliance with UKFS.

It was found that 74% of the 219 forestry sites that were inspected were fully compliant with the GBRs referenced within the UKFS, with many businesses demonstrating excellent site management. However, 26% were non-compliant with the key issues including:

- poor cultivation
- land and road drains carrying pollution to watercourses
- forest road runoff causing water quality issues



**Figure 6. Forestry site inspections comparison 2014-2015 and 2019**

Most non-compliances centred on heavy machinery working on difficult terrain. Often there is limited ground vegetation cover binding the soil which, combined with steep slopes and high rainfall, are factors that increase the risk of silt water runoff to rivers. Heavy vehicle movement along forest tracks also generates silt water runoff into roadside drains directly connected into watercourses.

In February 2019, SEPA ran a follow up survey of 20 forestry sites to gain a ‘snapshot picture’ of compliance. The survey indicated that 90% of sites were fully compliant with UKFS, while 10% were non-compliant due to waste management issues and poor site pollution mitigation. Despite the small sample number, the improvement in compliance is very encouraging and suggests a marked improvement in environmental management.

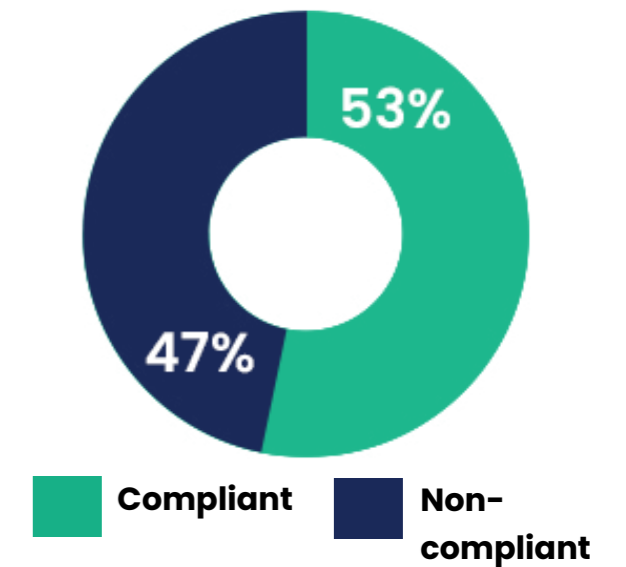


**Image: Forest machinery working on a steep slope**

In 2022 to 2023, SEPA ran a similar compliance project in Argyll using the same inspection format, sector contact and compliance assessment procedure with results shared with the sector and Confor. A final report was published by SEPA in February 2024. Of the 47 sites inspected, only 53% were fully compliant with good forestry practices contained within UKFS and supporting guidance. However, 47% were non-compliant with UKFS with key issues including:

- waste arisings left uncollected on site
- excessive volumes of Roadside timber left uncollected
- riparian Buffer zone intrusion for commercial conifer planting
- log bridges left on site
- ATV tracks straight uphill, no sumps or drainage mitigation
- poor site water management practices
- lengthy timber haul routes unbrushed
- poor engineering practices
- poor machinery choices for steep slopes/loose soils/difficult wet terrain
- tree guards left on site

**Argyll compliance 2022/2023**



**Figure 7. Argyll forestry site inspections 2022 - 2023**

The key messages from this project were **‘Argyll is wet, Plan for it’** and also **‘Work slower to finish faster’**.

Awareness workshops and update meetings have been held with Scottish Forestry, Confor, Lantra, FLS and private companies across 2024 to discuss the report findings and to find a way for the sector to resolve the key issues. UKFS is very clear in stating that forestry operators should deviate from UKFS depending on local, regional or national priorities and sensitivities, therefore the unique challenges of Argyll require local solutions to those challenges.

SEPA intends to undertake follow up Argyll forestry compliance work in 2027 to assess improvement.

In 2025, SEPA commenced forestry inspection work in Invernessshire (South) around Fort William in March 2025 and Fort Augustus/Drumnadrochit in November 2025. This involved attending site walkovers accompanied by FLS and private sector companies which was welcomed. Further inspections are planned in April and October 2026. The same project format was followed as per previous forestry project work in Argyll and South Scotland with Confor and other sector key players updated. Inspection results will be shared upon completion of this work by end of 2026.

## How will we work with the forestry sector to address non compliance issues?

Since 2015, we have improved communication and partnership working with Scottish Forestry and many businesses to promote environmental compliance and ensure UKFS is met at all sites. This has been achieved through support for the Forestry and Water Scotland (FWS) Group, which has focussed on developing information tools to improve attitudes and behaviours of contractors, supervisors, managers and landowners that ultimately improves corporate culture and environmental responsibility within those businesses. Such tools include good practice booklets, stickers, videos, fact sheets, bulletins and media releases all placed on the FWS web platform for easy access. The FWS Group has been in hiatus since 2020 and SEPA continues to press for its re-establishment.

In addition, joint workshop style training for contractors and managers has been rolled out across Scotland to promote the good forestry practice message.

### SEPA will:

- work with Scottish Forestry to implement our memorandum of understanding protocol to reflect devolved changes and the content of Scotland's Forestry Strategy 2019–2029, and to clarify roles and responsibilities in achieving and regulating environmental improvement;
- continue and expand local, regional and national liaison meetings with Scottish Forestry and Forestry and Land Scotland to discuss policy and operational matters;
- identify opportunities to engage regularly with Confor and private businesses;
- continue supporting the FWS group to produce simplified guidance on key operational issues and deliver good forestry practices;
- provide input to fact sheets on key areas such as soil management, chemical applications and management, private water supplies and operational guidance;
- contribute further to information tools such as video productions and Toolbox Talks showcasing good forestry practices;
- promote sustainable forestry and good practice guidance with our partners via road shows, workshops and open days;
- build on the Tilhill Forestry Initiative to promote good practice and compliance with environmental obligations through focussed operator and management training courses;
- expand the SEPA Forestry Inspection project to cover Argyll (Phase 2) and Highlands (Phase 3) to measure the success of the improved guidance, workshops, fact sheets and videos in terms of site compliance;
- coordinate regular GBR compliance spot checks to ensure all forestry businesses comply with UKFS

- work in partnership with Scottish Forestry and Scottish Government to review diffuse pollution GBRs and guidance that relate to forestry activities.
- work with Scottish Forestry to identify sections of rivers where physical habitat can be improved to deliver biodiversity and natural flood management benefits
- provide advice and guidance on good channel and river corridor management.

### Case Study: Diffuse pollution workshop training initiative

Diffuse Pollution workshop training was initiated with Tilhill Forestry in 2013 with the aim of rolling out workshop-style training for contractors and managers. This awareness training has expanded to accommodate state, private companies and land agents with over 1500 people trained on good environmental practices across the UK (Figure 8). The initiative includes reviewing company staff bulletins, fact sheets and assisting in the production of new information packages and training videos.

This will take workshop training to people based remotely and enable companies to train their staff in the workplace.

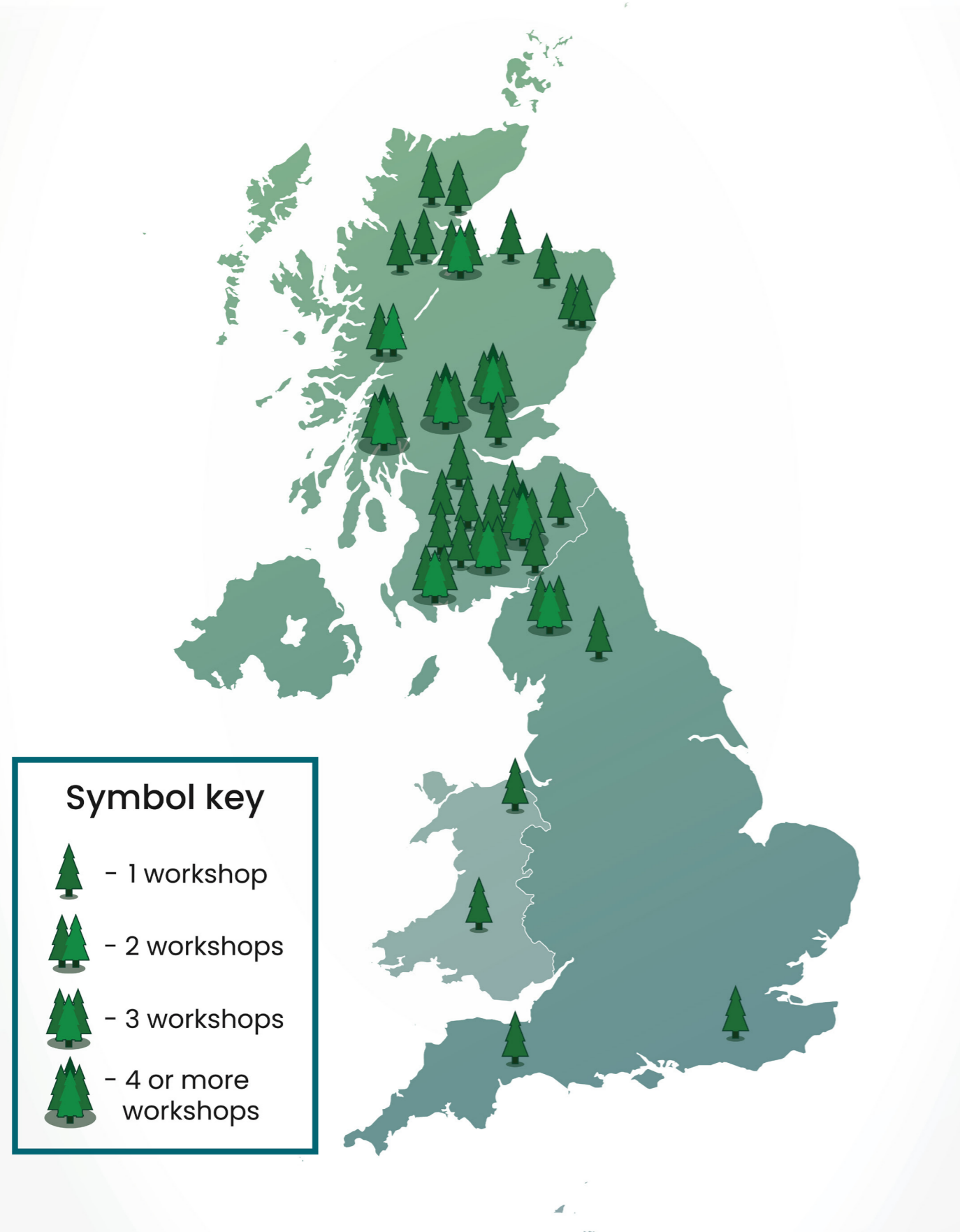
SEPA has also assisted government agencies and attended national symposia and trade events to deliver our environmental compliance message.

The sector has reacted positively to our inspection findings that demonstrate the need to improve forestry practices in certain areas. The aim of the partnership training approach is to ensure consistency across the sector.



**Image:** Attendees at a diffuse pollution workshop

## Forestry workshop locations



**Figure 8.** Forestry diffuse pollution workshop locations

## 7. Water

The water environment is essential to all life in Scotland – including the water used for human consumption and to support biodiversity. The water environment also sustains places that benefit the health and well-being of people, communities and supports tourism.

The climate is changing, placing more pressure on the water environment. We are facing a climate emergency. Nine of the UK’s ten warmest years have still occurred since 2002, and many of the country’s wettest years have also occurred since the late 1990s. Climate change could see summers in Scotland up to 4.8 degrees warmer and 40% drier. Droughts will become more frequent and we are likely to experience more damaging floods. Scotland’s population is also growing, placing increasing demands on land and natural resources as we build more homes and infrastructure, increase water supply, grow more food and produce more waste.

SEPA is in a strong position to help tackle the climate emergency through our compliance water work.

Water is essential for forestry to grow high value timber. Appropriate ground preparation techniques tied in with species selection and good soil management allows rainwater to percolate to sapling roots uninhibited; this encourages good tree growth and a healthy crop production.

Water scarcity pressures mean we must live and prosper within our environmental water limits; maximising the efficiency of its use; reducing the input of waste materials; creating better places for people to thrive and protecting and restoring habitats for wildlife. By doing so, the forestry sector will support and complement the ambitious targets set out in Scotland’s river basin management plans (RBMPs) and flood risk management plans (FRMPs).

### SEPA’s aspirations are to:

- continue working in partnership with Scottish Forestry, across businesses to encourage aspects of UKFS that achieve full compliance, actively promoting and encouraging adoption through training and guidance
- work with the Scottish Government to deliver Scotland’s Forestry Strategy priorities including enhancing the environmental benefits provided by forest and woodlands, in particular focusing on protecting and enhancing associated biodiversity
- work with Scottish Forestry, NatureScot and fisheries trusts to deliver actions laid out in the RBMPs and to identify further opportunities to protect and restore soils, deep peat and the water environment

## SEPA's aspirations continued...

- promote the delivery of '**Creating and Managing Riparian Woodland**' Guidance published by Scottish Forestry and the multiple nature benefits within
- continue the ongoing work with Scottish Forestry on flood risk management strategies and opportunity mapping to ensure the right tree in the right place for the right reason helps improve water quality, the management of high and low river flows, soil and peatland protection, surface water drainage and the restoration of urban rivers and peatlands
- regularly review existing concordats between SEPA, NatureScot, Historic Environment Scotland (HES) and Scottish Forestry to provide clarity on roles and responsibilities and further develop our partnership working
- ensure the measures contained within the UKFS are delivered to ensure environmental protection is appropriately addressed
- review our engagement with the planning system to streamline forestry consultations and ensure we deliver advice and guidance to our partners
- work in partnership with Scottish Water to identify sensitive water supply catchment areas where forestry can protect and enhance the quality of drinking water sources
- support the work of SEPA's Riverwoods Core Group to ensure the Agency supports the Riverwoods Initiative in delivering riparian zone nature benefits to meet RBMP targets
- work closely with other SEPA land use teams to promote the environmental benefits of trees, for example farm woodlands and agroforestry
- recognise the value and importance of soil as part of our natural capital, and soil protection to avoid degradation
- avoid the use of plastic tree protection, use fully biodegradable guards and remove/recycle tubes and stakes as part of a circular economy approach
- share information between SEPA, certification schemes and bodies to enhance the effectiveness and consistency of regulation and voluntary certification and work with the sector to promote the benefits of certification.



*Image: Aerial view of a forest and river (Credit: JohnFScott)*

## 8. Summary of actions and aspirations to address forestry non-compliance

---

### Better environment

**Environmental pollution risks are being avoided or controlled at source wherever possible.**

#### Actions and aspirations:

- We will review our engagement with the planning system to streamline forestry consultations and ensure we deliver advice and guidance that dovetails with Scotland's Forestry Strategy 2019–2029, UKFS and Scottish Forestry advice and guidance.
- We will continue to support training and work with Scottish Forestry and others to promote good practice and compliance with regulatory requirements across the forestry sector through training courses, guidance, fact sheets, video productions and workshop events.
- We will support the reactivation of the Forestry and Water Scotland working group with Scottish Forestry, Scottish Government, Confor, Forestry Contracting Association and Scottish Water.
- We will continue to work with Scottish Forestry, NatureScot, and fisheries trusts to deliver actions laid out in the river basin management plans (RBMPs).

**Full compliance and stronger environmental performance is achieved and good practice following UKFS guidelines is rewarded**

#### Actions and aspirations:

- We will target our regulatory effort to bring non-compliant sites up to full compliance as quickly as possible.
- We will work in partnership with Scottish Forestry and the Scottish Government to review the EASR diffuse pollution General Binding Rules (GBRs) and guidance that relate to forestry activities.
- We will coordinate regular GBR compliance checks via SEPA's Forestry Inspection Project to ensure all forestry operators and businesses comply with regulations.
- We will work to link environmental performance with woodland certification audits and schemes to reward environmental excellence

### Stronger partnerships

**Scotland has a resilient, multi-benefit, sustainable forestry and woodland sector that plays a significant role in climate change mitigation.**

#### Actions and aspirations:

- We will support, provide specialist evidence and advice and collaborate with Scottish Government, Scottish Forestry, Forest Research, Confor, Nature Scot, certification schemes and bodies, trade associations, businesses, local authorities and other organisations to assist deliver Scottish Governments Scotland's Forestry Strategy and associated Implementation Plan.
- Follow the 'right tree in the right place for the right reason' approach alongside integrated land management, opportunity mapping, natural flood management, natural capital considerations, biodiversity improvements, protection of soils, protection and restoration of peatlands, and effective forestry planning.
- We will regularly review our concordats between SEPA, NatureScot, HES and Scottish Forestry to provide clarity on roles and responsibilities and further develop our partnership working.



*Image: Harvester working at sunset*

NetRegs

environmental regulations online

[www.netregs.org.uk](http://www.netregs.org.uk)